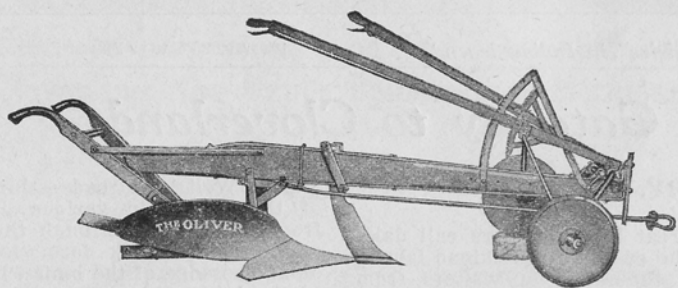


For Your Plowing Needs



This Oliver brush breaker plow is exceptionally well suited for plowing the rough, broken and root filled soil of newly cleared land. It has strength to withstand the hard usage. It will thoroughly turn the heavy virgin soil. Equipped with a strong dial hitch and furnished when desired with an easily operated forecarriage, this plow is adapted for horse or tractor use.

We welcome the opportunity to serve you.

Oliver Chilled Plow Works

Plowmakers for the World

MILWAUKEE, WISCONSIN

Member of Milwaukee Association of Commerce.

We Are on the Job

The Prescott Company is taking prompt care of its customers' orders, and every department of the big shops reflects the hum of industry.

We are building saw mill machinery and mine pumps for particular customers in every part of the world. Every one knows this is one of the largest machinery plants in the northwest, and the users of Prescott machinery know it is also the best.

THE PRESCOTT CO.
MENOMINEE, MICHIGAN

Marquette County's Good Roads and Scenery

By GEORGE A. NEWETT, Editor Ishpeming Iron Ore

WHEN the tourist comes to Marquette County, Cloverland, Michigan, he will enjoy that which he may have anticipated in good roads as nowhere on his trip from Maine, California, Alabama, or Canada will he find better.

Marquette county appreciating the value of better highways, began making them fifteen years ago and has been keeping at it ever since. A majority of its road commissioners are representatives of two of the great mining organizations in the county, and country and a most liberal, as well as practical, system of road construction has been adopted and energetically prosecuted.

Marquette county now takes pride in having ready fine highways over which visitors may come and go as well as for the pleasure and profit of its own people.

The little sketch map herewith presented shows the roads of the county and may be retained as reference by

afford opportunity for camping. It is an ever-changing scene, a panorama of absorbing interest and beauty.

Every drop of water is good to drink.

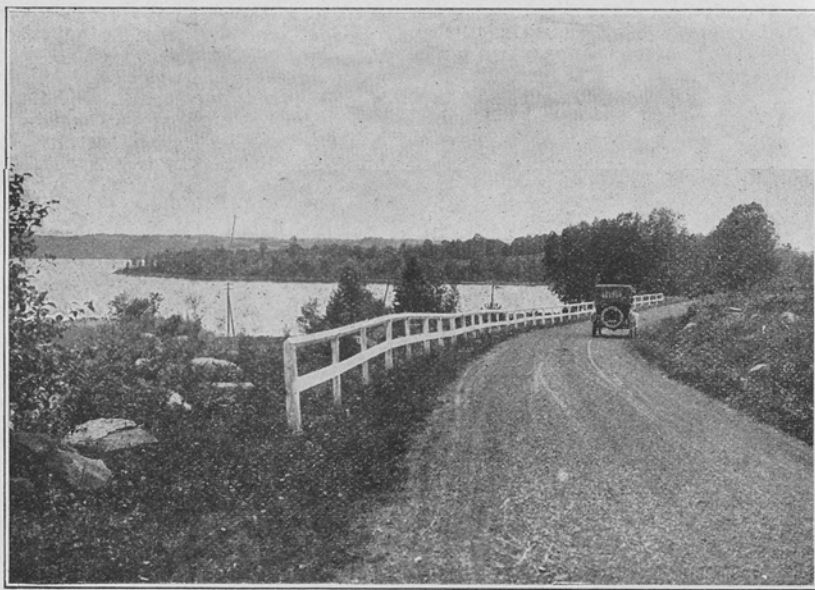
There are no poisonous snakes, and very few of any kind.

Marquette city has Presque Isle, a beautiful one, where wild deer, many of them, run at will. It is a beautiful town, with many attractive homes, great ore docks and many other attractions. It's on Lake Superior.

Ishpeming, Negaunee, Gwinn, Princeton, Palmer, Republic are mining towns, models of their kind, the neatest and best-kept anywhere. Prizes are given by mining companies for the best-kept premises, vegetable gardens, vine planting and window box gardening.

Lake Michigamme, at the western end of the county has 55 miles of shore line, 32 islands, a wonderful gem with a wild wood setting.

Marquette county is centrally located



Beauty unsurpassed on this splendid Lake Side macadam highway

those who plan on coming our way.

From the south Marquette county may be reached from Escanaba at McFarland, on the eastern side, continuing north by way of Carlshend, Skandia, to Marquette, and west from this point through Negaunee, Ishpeming, Champion and Michigamme on the way to the Michigan copper region. Or a route may be taken leading northwest from a point north of Cyr to Gwinn, Palmer, and on to Negaunee. Or a more easterly road can be taken through Delta and Dickinson counties from Escanaba, striking Marquette county near Witch Lake, thence to Republic and on to Humboldt, at which junction one may go east to the iron district or west to the copper country. And all over good roads.

Marquette county is one of the most attractive portions of Cloverland, as well as of the great northwest. It has an area of about 1,000 square miles, is larger than the state of Rhode Island and every foot of it is interesting. In topography it presents a great variety of views, level plains, lofty, rugged hills approaching mountains in size, innumerable streams and inland lakes while 70 miles of its eastern boundary is laved, or hammered by the waters of Lake Superior. It has thousands of acres of forests, made up of a great variety of wooded growth and containing deer, bear, wolves, foxes, beaver, snowshoe hares, grouse, and other wild life. Its waters hold speckled and rainbow trout, bass, pike, pickerel, perch and other fine food and game fish.

Mile after mile of fine roads pass through these wonderful woods where ample shade is provided for the hot days and where many open spaces

ed in Cloverland, and has many historic spots that will be of interest to the visitor. It was here the first iron ore in the northwest was found and where the first iron blooms were made. It has, in addition to its minerals and timber, fine agricultural and grazing lands. It boasts the record Holstein cow of America. Great flocks of sheep are being raised here. It has a wonderful verde antique marble quarry and a splendid climate.

There are golf courses at Ishpeming and Negaunee.

Come and mix with these great north woods, pure waters and climatic energy.

And please, when you have finished with it, put your camp fire out. Save the woods for your future enjoyment.

Any information concerning the roads not herein contained may be had by addressing K. I. Sawyer, superintendent of Marquette county road commission, Ishpeming, Mich.

